

**WorkAbout Pro G2 – Workabout Pro 2  
Accessory Catalog**



# WorkAbout Pro G2

## WorkAbout Pro 3



# Table of Contents

- Batteries
- Battery Doors
- Cables and Adapters
- Carrying Devices and Covering Accessories
- Chargers and Docking Stations
- Power Supplies and Accessories
- Vehicle Mounts and Cradles
- Vehicle Cradle Accessories
- End-Caps
- Radio Options – WLAN
- Radio Options – WWAN
- RFID Options
- Linear Scanners
- 1D Imagers
- 2D Imagers
- Software Options
- Miscellaneous

# Batteries



Part No: 1050494 Model No: WA3006

## High Capacity (3300 mAh) Lithium Ion Rechargeable Battery

The High Capacity Lithium Ion Rechargeable Battery pack provides 3300 mAh of capacity at 3.7 volts. The 3300 mAh battery offers approximately 22% more power than the 2350 mAh battery which makes it ideal for solutions that deploy high-speed WWAN and WLAN radios, data capture devices and other peripherals. The 3000 mAh battery is an Advanced Smart Battery that has a power indicator so that the battery's state of charge is always known. A high capacity battery door is required with the High Capacity Battery.



Part No: 1050192-002 Model No: WA3010

## Super High Capacity (4400 mAh) Lithium Ion Rechargeable Battery

The Super High Capacity Lithium Ion Rechargeable Battery pack provides 4400 mAh of capacity at 3.7 volts. The 4400 mAh battery is an Advanced Smart Battery that has a power indicator so that the battery's state of charge is always known. A super high capacity battery door is required with the Super High Capacity Battery.

Part No: 1050944 Model No: None

Backup battery for Workabout Pro G2 and Workabout Pro 3

**Battery shift life:** In order to establish a benchmark, we run the same battery run down test on every new hand held device. Every 12 seconds we scan a 1D barcode via laser scanner, and transmit the barcode data over 802.11g, repeat until battery is depleted. This test simulates a scan-intensive environment, not allowing the device to suspend, shutdown, or take advantage of any power saving. The WAP C G1 lasts 8 hours, 23 minutes with a 3300 mAh battery pack in this test. The WAP C G2 lasts 7 hours, 2 minutes in this test. Since the WAP G2 is using a faster processor, larger memory, and includes 2 additional LED's for display backlighting, it is logical that using the same battery pack (3300 mAh) results in less battery shift life when compared to the WAP G1. The 4400 mAh battery pack delivers 9 hours, 33 minutes in this test. WAP S G1 and WAP S G2 versions deliver approximately 20 minutes more in these test scenarios.

# Battery Doors

## High Capacity (3300 mAh) Battery Doors



Part No: 1050917-002, Model No: WA3016-G2

*For Workabout Pro G2 3 S (numeric) and Workabout Pro 3 S (numeric) and Q (Querty) versions*



Part No: 1050916-001, Model No: WA3015-G2

*For Workabout pro G2 and 3 C (full alpha) version*

## Super High Capacity (4400 mAh) Battery Doors



Part No: 1050919-001, Model No: WA3018-G2

*For Workabout Pro G2 3 S (numeric) and Workabout Pro 3 S (numeric) and Q (Querty) versions*



Part No: 1050918-001, Model No: WA3017-G2

*For Workabout pro G2 and 3 C (full alpha) version*

# Cables and Adapters



Part No: N/A, Model No: WA4015-G1

## **Serial USB to RS232 Converter Cable**

Connects to WA4002, WA4002-G1, and WA4003-G2 desktop docking stations to provide RS232 connectivity.



Part No: N/A, Model No: WA4010-G1

## **USB to Ethernet Adapter**

Connects to WA4002, WA4002-G1, and WA4003-G2 desktop docking stations to provide 10/100bT ethernet support.



Part No: 1050077, Model No: WA4020-G2

## **Cable, Tether Serial USB to RS232 converter**

This Tether Serial USB to RS232 Adapter provides RS232 connectivity to the WORKABOUT PRO through the tether port on the bottom of the handheld unit.

# Cables and Adapters (cont'd)

**Tether Cable**



Part No: 1030223, Model No: WA1050

**Cable, Connector Tether (with fly wire)**



Part No: 1030315, Model No: CA2900

**Tether Cable Open-Ended - 6FT with strain**



Part No: N/A, Model No: CA2950-G1



Part No: 1050552, Model No: WA1002

## **Tether to USB A Cable**

Enables users to connect USB A terminated devices (such as printers, scanners, GPS module) to the WORKABOUT PRO, 3 point tether connector improves strength and stability when connected to the device.



Part No:N/A, Model No: WA4001-G2

## **Tether to USB B for Active Sync**

This cable allows a user to connect a WAP G2 or 3 to a laptop or desktop for Activesync without requiring a docking station. It's important to note that the WAP is not charged through this USB cable. We recommend the PS1050-G2 for charging, which is the AC power adapter used on the G1 and G2 desktop docking station – comes with power connections for worldwide use, and plugs into the DC power jack on the base of the WAP G2.or 3. Includes USB cable.

# Cables and Adapters (cont'd)



**Cable, Tether to Ethernet Adapter**

Part No: N/A, Model No: WA4025



**Vehicle Cradle USB Cable Adapter**

Enables users to connect USB A and USB B terminated devices directly to the Vehicle Cradle's DB15 pin connector without using the Port Replicator.

Part No: 1050551, Model No: WA1001



**Powered Vehicle Cradle Cable**

Promark power extension, DC, 6', waterproof with 10A fuse & choke

Part No: N/A, Model No: CA1210



# Carrying Devices and Covering Accessories

**Handstrap** - double loop, with stylus for Workabout Pro G2/C C



Part No: N/A, Model No: WA6025

**Handstrap** - double loop, with stylus for Workabout Pro G2 S or WAP 3 S/Q



Part No: N/A, Model No: WA6125

**Handstrap** - double loop, w/o stylus for Workabout Pro G2/3 C



Part No: N/A, Model No: WA6026

**Handstrap** - double loop, w/o stylus for Workabout Pro G2 S or WAP 3 S/Q



Part No: N/A, Model No: WA6126



Part No: N/A, Model No: 6091

## **Nylon Pouch (C,S, Q)**

The nylon pouch is an ideal accessory for carrying the WORKABOUT PRO when using it without the pistol grip. It will work with each of the C, S or Q models. The pouch comes with a metal swivel and belt loop. Because the WORKABOUT PRO is inserted into the pouch facing upright, the pouch will not interfere with the PC card end cap. Pouch (Nylon C,S, Q)

# Carrying Devices and Covering Accessories



Part No: N/A, Model No: WA6197-G2



Part No: N/A, Model No: WA6097-G2



Part No: 30585, Model No: N/A

## **Protective Carrying Case Universal Endcap, Open Ended for Workabout Pro G2 S or Workabout Pro 3 S/Q**

The case does not interfere with scanning and can be used with or without the scanner attached. It can also be used with either the pistol grip and non-pistol grip units, as well as with the hand strap. Removing the hand held is easily done through a “trap door” on the back of the case. This case is also compatible with the standard shoulder strap (P/N 30585), however, only the belt loop is included.

## **Protective Carrying Case Universal Endcap, Open Ended for Workabout Pro G2/3 C**

The case does not interfere with scanning and can be used with or without the scanner attached. It can also be used with both the pistol grip and non-pistol grip units. Removing the handheld is easily done through a “trap door” on the back of the case. This case is also compatible with the standard shoulder strap (P/N 30585), however, only the belt loop is included.

## **Shoulder Strap for Protective Carry Cases (C,S, Q)**

The 6-foot shoulder strap with pad allows a user to hang the terminal, in the protective case, over their shoulder. Hanging the terminal facilitates unimpaired operator movement. The shoulder strap attaches to metal clips on the protective case.

# Carrying Devices and Covering Accessories



Part No: 1030227, Model No: WA6050

## Soft-Shell Holster

This convenient and easy to use soft-shell holster with removable belt and swivel holster pad can be used to hang a WORKABOUT PRO with a pistol grip securely from the waist.



Part No: 1050460-001, Model No: WA6101-G1

## Pistol Grip

The WORKABOUT PRO pistol grip attachment allows users to convert the WORKABOUT PRO to a convenient pistol grip unit. This WORKABOUT PRO pistol grip works with the WA9000-G1, WA9003-G1, and WA9005-G1 and it is compatible with G1, G2 and 3 models. The pistol grip comes with 4 screws and a printed instruction sheet. (Instructions are also available electronically).



Part No: 1050459-001, Model No: WA6102-G1

## Pistol Grip

The WORKABOUT PRO pistol grip attachment allows users to convert the WORKABOUT PRO to a convenient pistol grip unit. This WORKABOUT PRO pistol grip works with the WA9212-G1 slim pod 2D imager. The pistol grip comes with 4 screws and a printed instruction sheet. (Instructions are also available electronically).

Part No: N/A, Model No: WA6103

## Flush Mount Pistol Grip

The WORKABOUT PRO pistol grip attachment allows users to convert the WORKABOUT PRO to a convenient pistol grip unit.

# Carrying Devices and Covering Accessories

Workabout Pro G2/3 C



Part No: N/A, Model No: WA6400



Part No: N/A, Model No: WA6402



Part No: N/A, Model No: WA6404

## Rubber Boots For:

GSM/WiFi Endcap

Auto Range Endcap

1D/2D Endcap



Part No: N/A, Model No: WA6401



Part No: N/A, Model No: WA6403



Part No: N/A, Model No: WA6405

Workabout Pro G2 S or  
Workabout Pro 3 S/Q

# Chargers and Docking Stations



Part No: N/A, Model No: WA4003-G2

## Desktop Docking Station with AC Adapter & Lead

The Desktop Docking Station supports all C and S and Q variants of WORKABOUT PRO G1, G2 and 3 devices and allows a WORKABOUT PRO M/C to be charged while simultaneously providing USB Host and Client functions. The Host USB port allows peripherals such as a printer, a keyboard, or a mouse to be connected while the Client USB port allows connectivity of the Docking Station to a PC.

An additional spare battery charge well is integrated into the Desktop Docking Station to ensure that your spare batteries remain fully charged and that your WORKABOUT PRO remains ready to perform. Charging internal batteries of the terminal takes approximately 3-5 hours depending on the battery type (3300 mAh or 4400 mAh).

The Desktop Docking Station is equipped with a single dual-coloured LED indicator to provide easy to read charge status. This docking station can consume up to 3A @ 120VAC or 1.5A @ 240VAC.

Note: An optional ethernet expansion module (WA4010-G1) converts docking station from USB to Ethernet.



# Chargers and Docking Stations (cont'd)



Part No: N/A, Model No: WA4204-G2



Part No:N/A, Model No: WA4304-G2



Part No: 9008693, Model No: N/A

## Quad Docking Station c/w UPS (no lead)

The 4 unit Multi-Dock allows up to four WORKABOUT PRO C units to be charged simultaneously while providing 10/100 BaseT Ethernet communications in excess of 2Mbps. This version of the 4 unit Multi-Dock is compatible with 7525M-E, 7525C-G1, 7527C-G2 and 7527-3. It also provides sufficient power to fast charge the batteries in the unit. Charging internal batteries of the terminal takes approximately 2-4 hours depending on the battery type. This docking station can consume up to 3A @ 120V AC or 1.5A @ 240V AC. A power lead is not included but can be ordered separately to suit the customer's region (p/n 9008693 for North America).

## Quad Docking Station c/w UPS (no lead)

The 4 unit Multi-Dock allows up to four WORKABOUT PRO S or Q units to be charged simultaneously while providing 10/100 BaseT Ethernet communications in excess of 2Mbps. This version of the 4 unit Multi-Dock is compatible with 7525S-G1, 7527S-G2 and 7527-3. It also provides sufficient power to fast charge the batteries in the unit. Charging internal batteries of the terminal takes approximately 2-4 hours depending on the battery type. This docking station can consume up to 3A @ 120V AC or 1.5A @ 240V AC. A power lead is not included but can be ordered separately to suit the customer's region (p/n 9008693 for North America).

# Chargers and Docking Stations (cont'd)



Part No: 1080221, Model No: WA3001-G1

## Single Battery Charger

The Single Battery Charger charges standard or High Capacity batteries one at a time. An appropriate power lead should be ordered at the time of purchase. (Universal Power Supply comes with the lead.)



Part No: 1080220, Model No: CA1067

## Power Supply and Lead for Single Unit Charger - North America – AC, 5V/2A



Part No: 1080220, Model No: WA3004-G1

## Quad Battery Charger

The Quad Battery Charger is capable of charging four batteries at once and can charge either Standard or High Capacity batteries. It comes with a Universal Power Supply. An appropriate power lead should be ordered at the time of purchase.



Part No: 9008693, Model No: N/A

## Power Lead for Quad Unit Charger - North America

# Power Supply And Accessories



Part No: 9001904, Model No: PS1050-G1

## Universal Power Supply

The universal power supply is used to provide DC power to the desktop docking station (WA4003-G2) from an AC source or to provide power directly to the Workabout Pro G2 handheld (plugs into DC power jack on base of unit). A power lead is included.



Part No: 1050463-001, Model No: WA3113-G2

## Automotive Power Supply

Cigarette lighter adapter connects directly to DC jack on base of Workabout Pro G2 handheld Includes automotive adapter and tether cable.

The automotive adapter fits any standard 12VDC car cigarette receptacle.



Part No: 19893-600, Model No: PS1300

## Power Pre-Regulator (15-55V) SINO

The DC/DC power pre-regulator provides power to the WORKABOUT PRO from any vehicle providing 15-55VDC input voltage.



# Vehicle Mounts and Cradles



Part No: 1080880-001, Model No: WA1210-G2



Part No: 1080881-001, Model No: WA1310-G2



Part No: N/A, Model No: CA1210

## Powered Vehicle Cradle 12V (C)

The Powered Vehicle Cradle is a highly ruggedized, single unit station dock. The Powered Vehicle Cradle is designed to allow the WORKABOUT PRO to be powered by a vehicle battery. The battery installed in the WORKABOUT PRO is also recharged by the vehicle battery. This option accepts DC power sources over the range 9V to 20V. Although it provides quick insertion and removal, the cradle holds the WORKABOUT PRO C securely even when operated in high vibration environments. This vehicle cradle is compatible with the RAM B 101 mount (WA4006) that can be adjusted three-dimensionally to give maximum display readability and device usability in any vehicle. A port replicator option (WA4005-G1) is available.

## Powered Vehicle Cradle 12V (S/Q)

The Powered Vehicle Cradle is a highly ruggedized, single unit station dock. The Powered Vehicle Cradle is designed to allow the WORKABOUT PRO to be powered by a vehicle battery. The battery installed in the WORKABOUT PRO is also recharged by the vehicle battery. This option accepts DC power sources over the range 9V to 20V. Although it provides quick insertion and removal, the cradle holds the WORKABOUT PRO S or Q securely even when operated in high vibration environments. This vehicle cradle is compatible with the RAM B 101 mount (WA4006) that can be adjusted three-dimensionally to give maximum display readability and device usability in any vehicle. A port replicator option (WA4005-G1) is available.

## Powered Vehicle Cradle Cable

Promark power extension, DC, 6', waterproof with 10A fuse & choke

# Vehicle Cradle Accessories



Part No: N/A, Model No: WA4006

## RAM B 101 Mount

This extremely rugged, heavy-duty universal mounting system with 1" ball joints, allow the Vehicle Cradle to be mounted in any vehicle providing easy access to the WORKABOUT PRO. This universal mounting system has locking joints and allows attached terminals to be adjusted three-dimensionally giving maximum display readability and device usability.



Part No: 1050551, Model No: WA1001

## Vehicle Cradle USB Cable Adapter

Enables users to connect USB A and USB B terminated devices directly to the Vehicle Cradle's DB15 pin connector without using the Port Replicator.



Part No: 1080224, Model No: WA4005-G1

## Port Replicator

The Port Replicator is an optional accessory that allows peripherals (e.g. printers or weigh scales) to be attached to the powered Vehicle Cradles for the WORKABOUT PRO. The Port Replicator supports as many as three serial devices and a USB Host when connected to the WORKABOUT PRO through a Vehicle Cradle. The Port Replicator has 4 peripheral ports:

- One USB 1.1 Client port to connect to a powered Host such as a Notebook
- Three, 9-pin, RS232 serial ports

USB and serial cables are not provided with the Port Replicator  
Serial devices may require a separate power supply.

# End-caps



Part No: N/A, Model No: BR1000-G1

### 3-Port Serial End-Cap (Kit)

The 3-Port Serial End-Cap provides IrDA, RS232, and TTL connectivity in a convenient location at the top of the WORKABOUT PRO.



Part No: 1050006, Model No: WA6209

### End-Cap (Standard)

This replacement part is for a standard End-Cap suitable for all WORKABOUT PRO models.

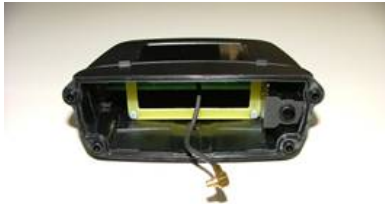


Part No: 1004212-001, Model No: N/A

### End-Cap (Multi Purpose) without GSM Shroud

This replacement part is for a multi purpose End-Cap (MPEC) suitable for all WORKABOUT PRO models.

# End-caps (cont'd)



### GPS End-Cap

GPS module housed inside MPEC with GSM Shroud End-Cap

Part No:1051350, Model No: N/A



### GPS End-Cap

GPS module housed inside MPEC without GSM Shroud

Part No: 1051355, Model No: N/A

# Radio Options – WLAN



Part No: N/A, Model No: RA2041

## 802.11b/g Direct Sequence (DS)-Extended Range Radio (CCX-Certified)

This 802.11b/g WLAN radio (also known as WiFi Radio) is provided in a user installable standard Compact Flash (CF) card format. This radio form factor enables users to add a WLAN radio to their device as required without returning it to the depot or having to buy a new device. The radio kit comes with the CF Card Radio, the mechanical stop, and the screws that are required to secure the radio in place.



Part No:N/A, Model No: RA2043

## 802.11 a/b/g Radio

This 802.11 a/b/g WLAN radio (also known as WiFi Radio) is provided in a user installable standard Compact Flash (CF) card format. This radio form factor enables users to add a WLAN radio to their device as required without returning it to the depot or having to buy a new device. The radio kit comes with the CF Card Radio, the mechanical stop, and the screws that are required to secure the radio in place.

**NOTE: only available for CE 5.0 units**

# Radio Options – WWAN



Part No: N/A, Model No: RA3030-G2

## **GSM/GPRS/EDGE xMod Radio (c/w CF Mech Stop, End-Cap)**

The GSM/GPRS/EDGE Quad-band module is a GSM radio expansion-module mounted on a user installable daughter board that interfaces easily with the 100-Pin connector located inside the WORKABOUT PRO accessed through the back cover plate. The expansion module accommodates a GSM/GPRS/EDGE Quad-band radio and a SIM card. The GSM/GPRS/EDGE kit includes the expansion board with GSM/GPRS Radio, GSM endcap, and mechanical stop. Supports data and voice. Compatible with G2 and 3 units only. WiFi compatible.



Part No:N/A, Model No: RA3040-G2

## **UMTS HC25 Radio Kit**

The UMTS module is a radio expansion-module mounted on a user installable daughter board that interfaces easily with the 100-Pin connector located inside the WORKABOUT PRO accessed through the back cover plate. The expansion module accommodates a UMTS radio and a SIM card. The UMTS kit includes the expansion board with the UMTS Radio, endcap, and mechanical stop. Supports data and voice. Compatible with G2 and 3 units only. WiFi compatible.

# RFID Options



**INDY™**  
R1000



Part No: 1100625, Model No: **UHF-CA3-AC5-G2**

## UHF Passive Multi Regional RFID Reader – Circular Antenna

The UHF-CA3-A5-G2 is an Impinj, Indy R1000 chipset, UHF passive reader solution which delivers superior performance, standards-based compatibility (EPC GEN2 compliant, ISO 18000-6C) in a unique compact form factor. Thanks to the ability to programmatically set the operating frequency, the reader most noticeable feature is its ability to operate in the U.S. (FCC part 15), European (ETSI EN 302 208), and IC (Canadian) regulatory environments. Other attractive product features are the RF programmable power settings (0 to 500 mW) and the future integration with the BizTalk RFID platform. Reader uses 100 pin interface while the circular antenna is housed inside a pod located on the back of the handheld. Product comes as a kit and will work with GPRS (RA-3030). The GPRS component must be purchased separately. For additional compatibility information please refer to the RFID Product Guide.



**INDY™**  
R1000

Part No: 1051585, Model No: **UHF-CA3-A1-G2**

## UHF Passive Multi Regional RFID Reader – Linear Antenna

The UHF-CA3-A1-G2 is an Impinj, Indy R1000 chipset, UHF passive reader solution which delivers superior performance, standards-based compatibility (EPC GEN2 compliant, ISO 18000-6C) in a unique compact form factor. Thanks to the ability to programmatically set the operating frequency, the reader most noticeable feature is its ability to operate in the U.S. (FCC part 15), European (ETSI EN 302 208), and IC (Canadian) regulatory environments. Other attractive product features are the RF programmable power settings (0 to 500 mW) and the future integration with the BizTalk RFID platform. Reader uses 100 pin interface while the linear antenna is housed inside multi purpose end-cap located at the top of the unit. Product comes as a kit and will not work with GPRS (end-cap antenna is available without GSM shroud only) For additional compatibility information please refer to the RFID Product Guide.

# RFID Options



Part No: 1051270, Model No: HF-AM1-G2

**HID USB HF Multi ISO (15693 & 14443 & NFC) RFID Kit**  
 Multi ISO, multi protocol High Frequency (13.56 MHz) RFID reader with integrated horizontal antenna. Reader housed inside multi purpose end-cap and is available with GSM antenna shroud only (p/n 1051270). Uses USB interface.



Part No: 1009096, Model No: HF-AM1-A2

**HID XMOD HF Multi ISO (15693 & 14443 & NFC) RFID Kit**  
 Multi ISO, multi protocol High Frequency (13.56 MHz) RFID reader with integrated horizontal antenna. Reader uses 100 pin interface while antenna is housed inside multi purpose end-cap. Model available without GSM antenna shroud only (p/n 1009096). Uses 100 pin interface.



# RFID Options (cont'd)



Part No: 1051310, Model No: HF-T2-G2

## Tagys USB HF (ISO 15693 & 18000-3) RFID Kit

Multi protocol High Frequency (13.56 MHz) RFID reader with integrated horizontal antenna. Reader housed inside multi purpose end-cap and is available with GSM antenna shroud only (p/n 1051310). Uses USB interface.



Part No: 1004320, Model No: HF-T2-G2X

## Tagys XMOD HF (ISO 15693 & 18000-3) RFID Kit

Multi protocol High Frequency (13.56 MHz) RFID reader with integrated horizontal antenna. Reader uses 100 pin interface while antenna is housed inside multi purpose end-cap. Model available without GSM antenna shroud only (p/n 1054320). Uses 100 pin interface.



Part No: 1004310, Model No: HF-T2-A3-G2

## Tagys HF RFID (ISO 15693 & 18000-3) Paddle for Workabout Pro G2

Rugged industrial design specifically for harsh environments, this RFID reader provides new 'track and trace' options for warehouse or logistics operations. Whether it is stacks of plastic crates, pallets, or other valuable assets, a simple wave of the arm instantly registers the RFID tag data. Connects to the Workabout Pro G2 via the tether port.

# RFID Options (cont'd)



Part No: 1051330, Model No: LF-AH1-G2

### **HID USB LF (ISO 11784 & 11785) RFID Kit**

Multi protocol Low Frequency (125 & 134.2 KHz) RFID reader with integrated horizontal antenna. Reader housed inside multi purpose end-cap and is available with GSM antenna shroud only (p/n 1051330). Uses USB interface.



Part No: 1009098, Model No: LF-AH1-A1

### **HID XMOD LF (ISO 11784 & 11785) RFID Kit**

Multi protocol Low Frequency (125 & 134.2 KHz) RFID reader with integrated horizontal antenna. Reader uses 100 pin interface while antenna is housed inside multi purpose end-cap. Model available without GSM antenna shroud only (p/n 1009098). Uses 100 pin interface.

# RFID Options (cont'd)



## Agident LF (ISO 11784 & 11785) RFID Kit

Integrated Low Frequency (134.2 KHz) reader offers convenient data collection for industrial and animal tracking applications, with the flexibility and mobility of a rugged portable Windows CE or Windows Workabout Pro G2. HDX and FDX-B compliant to ISO 11784/5 plus EM4x02 compatible. Uses the 100 pin interface and the endcap.

Part No:1003762, Model No: AIR200



## Agident LF RFID Telescopic Antenna

It is the right choice if a flexible length antenna is required e.g. for a more convenient transportation. Attached to the back of the Workabout Pro the AEA121 Low Frequency (134.2 KHz) antenna supports the one-hand reading concept and is the right solution when the long reading distance shall not reduce your mobility. Connects to the AIR200.

**Note: Will not work with any pod scanners.**

Part No: L9000349, Model No: AEA121

# Linear Scanners



Part No: N/A, Model No: WA9000-G1

## 1D xMod Laser Scanner SE1223 High Performance, POD Format

The SE1223 High Performance Scanner Module provides the highest performance in 1D bar code scanning. Only adding an additional 75g of weight to the WORKABOUT PRO, this scanner module ensures that users of the handheld computer can still maintain comfortable one-handed use for an entire shift without muscle fatigue. The scanner module integrates seamlessly into the back of the WORKABOUT PRO with six screws and can be installed with ease. The SE1223 High Performance Scanner Module supports the following Symbologies: UPC/EAN, Code 128, Code 39, Code 93, I 2 of 5, Discrete 2 of 5, Codabar, MSI UCC/EAN 128, and TriOptic Code 39. An optional Pistol Grip (WA6101-G1) is also available for use with the SE1223 HP module to allow users to convert the WORKABOUT PRO to a convenient pistol grip unit.



Part No: N/A, Model No: WA9002-G1

## 1D xMod Laser Scanner SE955, Slim POD Format

The SE955 Scanner Module provides the smallest and lightest scan engine available while still offering high performance in 1D bar code scanning. The SE955 features the unique “Adaptive Logic Technology” that enables damaged or poorly printed bar codes to be read. The ultra slim SE955 Scanner Module adds just 32g of weight and is integrated onto the back of the WORKABOUT PRO, ensuring that the unit is still light and ergonomic. This scanning module has a working range of up to 88.9cm (35in.) and supports the following Symbologies: UPC/EAN, Code 128, Code 39, Code 93, I 2 of 5, Discrete 2 of 5, Codabar, and MSI Plessey.

# Linear Scanners (cont'd)



Part No: N/A, Model No: WA9005-G1

## 1D xMod Laser Scanner SE1223 LR, POD Format

The SE1223 Long Range Scanner Module provides high performance and long range 1D bar code scanning. This scanning module reads bar codes up to 6.1 meters (20 feet) away. Only adding an additional 75g of weight to the WORKABOUT PRO, this scanner module ensures that users of the handheld computer can still maintain comfortable one-handed use for an entire shift without muscle fatigue. The scanner module integrates seamlessly into the back of the WORKABOUT PRO with six screws and can be installed with ease. The SE1223 LR Scanner Module supports the following Symbologies: UPC/EAN, Code 128, Code 39, Code 93, I 2 of 5, Discrete 2 of 5, Codabar, MSI UCC/EAN 128, and TriOptic Code 39. An optional Pistol Grip (WA6101-G1) is also available for use with the SE1223 LR module to allow users to convert the WORKABOUT PRO to a convenient pistol grip unit.



Part No: N/A, Model No: WA9102-G1

## 1D End-Cap Laser Scanner SE955, without GSM shroud

The SE955 Scanner Module provides the smallest and lightest scan engine available while still offering high performance in 1D bar code scanning. The SE955 features the unique “Adaptive Logic Technology” that enables damaged or poorly printed bar codes to be read. This scanning module has a working range of up to 88.9cm (35in.) and supports the following Symbologies: UPC/EAN, Code 128, Code 39, Code 93, I 2 of 5, Discrete 2 of 5, Codabar, and MSI Plessey.

# Linear Scanners (cont'd)



## 1D End-Cap Laser Scanner SE955, with GSM shroud

The SE955 Scanner Module provides the smallest and lightest scan engine available while still offering high performance in 1D bar code scanning. The SE955 features the unique “Adaptive Logic Technology” that enables damaged or poorly printed bar codes to be read. This scanning module has a working range of up to 88.9cm (35in.) and supports the following Symbologies: UPC/EAN, Code 128, Code 39, Code 93, I 2 of 5, Discrete 2 of 5, Codabar, and MSI Plessey.

Part No: N/A, Model No: WA9112-G1



## 1D End-Cap Auto-Range Laser Scanner SE1524 ER

Scans from a range of 2 inches to 45 feet. The SE1524ER uses state-of-the-art optical technology and fuzzy logic capability, providing reliability, durability and ease of use. Designed for the easy targeting and capture of bar codes at great distances — such as in multi-level warehouse environments — this scan engine has the widest working range in the industry.

Part No: N/A, Model No: WA9009-G1

# 1D Imagers



Part No: N/A, Model No: WA9003-G1

## 1D EV15 Imager, POD Format

This integrated 1D imager provides exceptional scanning performance and great reliability at a fraction of the cost of a standard laser bar code scanner. This imager has a quicker scan rate (270 scans per second) compared to that of laser bar code scanners which translates to enhanced decoding of degraded bar codes. The imager is also able to decipher bar codes in a full range of lighting conditions from total darkness to complete sunlight. Furthermore, because the imager does not have any moving parts, it consumes less power than a standard bar code scanner thus providing the WORKABOUT PRO with a longer battery life and offers a much longer MTBF (Mean Time Between Failure). The 1D imager supports UPC (E&A), EAN, Code 11, Code 39, Code 128, UCC EAN 128, ISBN, ISBT, Interleaved, Matrix, Industrial and Standard 2 of 5, Codabar, Code 93, MSI, Plessey, and Telepen symbologies. This 1D imager module integrates seamlessly onto the back of the handheld unit and can be installed with ease. Compatible with G1 and G2. Also compatible with pistol grip (WA6101-G1).



Part No: N/A, Model No: WA9103-G1

## 1D EV15 End-Cap Imager, without GSM shroud

This integrated 1D imager provides exceptional scanning performance and great reliability at a fraction of the cost of a standard laser bar code scanner. This imager has a quicker scan rate (270 scans per second) compared to that of laser bar code scanners which translates to enhanced decoding of degraded bar codes. The imager is also able to decipher bar codes in a full range of lighting conditions from total darkness to complete sunlight.

# 1D Imagers (cont'd)



## 1D EV15 End-Cap Imager, with GSM shroud

This integrated 1D imager provides exceptional scanning performance and great reliability at a fraction of the cost of a standard laser bar code scanner. This imager has a quicker scan rate (270 scans per second) compared to that of laser bar code scanners which translates to enhanced decoding of degraded bar codes. The imager is also able to decipher bar codes in a full range of lighting conditions from total darkness to complete sunlight.

Part No: N/A, Model No: WA9113-G1



# 2D Imagers



**End-Cap 2D Imager, without GSM shroud**  
HHP5180 2D end-cap imager.

Part No: N/A, Model No: WA8010-G1



**2D Slim Pod SX5400 Imager**

SX5400 2D slim pod imager. Compatible with G2 only. Also compatible with WA6102-G1 pistol grip.

Part No: N/A, Model No: WA9008



**2D Slim Pod HHP 5180 Imager**

Compatible with pistol grip WA6102-G1 as well as with G1 and G2.

Part No: N/A, Model No: WA9212-G1

# Software Options



Part No: N/A, Model No: SW2600

## **MCC (Mobile Control Center)**

Device management software to help manage the mobile device fleet. Monitor device status, run activity reports, install and update software. Plus troubleshooting, configuration, security and back-up.



Part No: N/A, Model No: 310-LI-AV\*

## **Wavelink Avalanche**

Integrates with Psion Teklogix devices for centralized, rapid, hands-off updates to mobile data terminals anywhere in the enterprise. Slashes IT admin costs and greatly improves ROI.



Part No: N/A, Model No: SW2100

## **Naurtech**

We've partnered with Naurtech to develop the CETerm Smart Client for Psion Teklogix mobile computers. Feature-rich application interface lets you develop data collection solutions via terminal emulations or the web browser.

# Software Options (cont'd)



Part No: N/A, Model No: S3010

## OpenTek Term

A powerful terminal-emulation application ideal for real-time data transaction apps associated with mainframes and servers. Supports ANSI and TESS emulation, and comes with a raft of features to help configuration and improve emulation session performance.

## Win TekTerm

Win TekTerm is a similar emulation client designed to run on Windows desktop-like computers, like the 8580/8590 vehicle mount computers.



Part No: N/A, Model No: N/A

## Total Recall

Protects your apps, device configuration, and data. Features an easy-to-use profile manager and automatic back-up and restore capability. Plus automatic profile restoration after a cold reboot. This utility is provided free of charge and is loaded in the OS of the handheld.



Part No: N/A, Model No: N/A

## Psion Teklogix SDK

Our open, flexible software development kit helps developers create great mobile apps fast – then port them to any Psion Teklogix device. The SDK is provided free of charge.

# Software Options (cont'd)



## PTX Connect

A powerful enterprise communications platform that supports push-to-talk, instant messaging and email using VoIP technology – all on the same rugged devices your people use for data capture.

Part No: N/A, Model No: SW2500

## Other Software Options

**Funk Odyssey Client** - p/n S2400

### AirFortress™

CE .Net Client for WORKABOUT PRO - p/n S400

### RFID Demo Applications

Available for all readers listed in this catalog. Please contact your technical representative to discuss the solution(s) which best fits your needs.

### RFID SDKs

Available for all readers listed in this catalog. Please contact your technical representative to discuss the solution(s) which best fits your needs.

# Miscellaneous



Part No: N/A, Model No: WA9001-G1

## PC Card xMod Kit (c/w CF/PC Card Mechanical Stop)

Installs onto 100 pin internal expansion connector to provide a PCMCIA card slot.

Note: custom mechanical stop may be required for various sizes of cards.



Part No: 1030394, Model No: WA6100-G1

## Stylus

This pack contains 5 replacement styluses suitable for all WORKABOUT PRO models.



Part No: 1030271, Model No: WA6208

## Plate Back Cover, Standard

This replacement Back Plate Cover is suitable for all WORKABOUT PRO models.

## Miscellaneous (cont'd)



### High Durability Screen Protector

These highly durable Screen Protectors help prevent your WORKABOUT PRO G2 C or S display from unwanted scratches. Pack of 4.

Part No: 1051110, Model No: WA6112-G2



### Plastic Stylus with holder kit, tethered stylus

Part No: 1030271, Model No: WA6310-G1